



# PARMARTH SAMAJ SEVI SANSTHAN



# ANNUAL REPORT 2023-2024

*Signature*





# Table Of Content

**03** Message From Chairperson

---

**05** Who We Are

---

**07** Results Achieved

---

**10** Key Strategies

---

**13** Team Structure

---

**15** Key Focus Areas

---

**18** Recognition & Scaling Up

---

**20** Impact Of Pani Panchayat Model

---

**22** Key Impact

---

**24** Overview Of Jal Tara Techniques

---

**27** Agriculture & Livestock  
Development

---

**31** Education

---

**36** Publication

---

**39** Financial Overview

---

**04** Vision, Mission, & Approach

---

**06** Key Areas Of Work

---

**08** Core Values

---

**11** Geographical Areas

---

**14** Patnership & Collabrations

---

**17** Jal Saheli & Pani Panchayat

---

**19** Pani Panchayat Model

---

**21** Recognition & Scaling Up

---

**23** Advocacy For Rejuvenation  
Of Small Rivers

---

**25** Addressing climate change

---

**29** Key Impact

---

**34** Health, Sanitation and Nutrition

---

**37** Print Media Coverage

---

**40** List of approved projects

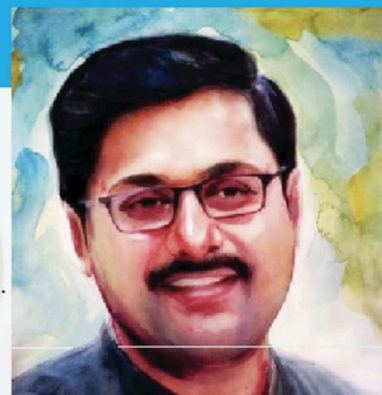
---

---

**42** Reach us

---

# Message From Chairperson



As I reflect on the past year's achievements, I am filled with immense pride in the progress Parmarth Samaj Sevi Sansthan has made across our key focus areas. Our commitment to address the critical challenges faced by the deprived communities remains unwavering, and our efforts have led to tangible, positive changes in their lives.

In Water Management, we have rejuvenated water bodies and small rivers, promoted sustainable agricultural practices, and empowered communities to take charge of their water resources. Our work in this area has significantly enhanced water availability, improved agricultural productivity, and built resilience against water scarcity. The Pani Panchayats and the Jal Saheli models are prime examples of how community-led efforts can drive sustainable change and foster long-term stewardship of natural resources.

Our initiatives in Agriculture and Livestock Development have empowered farmers and livestock owners with the knowledge and tools needed to increase productivity, enhance income, and adapt to the challenges posed by climate change.

In Education, Parmarth has continued to focus on increasing access to quality learning opportunities for children of marginalized communities. By improving school infrastructure, supporting teachers' training, and fostering community involvement, we have created an inclusive and supportive learning environment where children can thrive both academically and holistically.

Our initiatives in WASH issues have helped in improving drinking water supply, sanitation and promotion of safe hygiene practices among the communities to foster long-term behaviour change that supports healthier communities. Our nutrition garden interventions have helped in combating malnutrition among women and children as well as helped in reusing kitchen waste water.

These accomplishments are a testament to our holistic approach, which integrates community empowerment, environmental stewardship, and sustainable development into every aspect of our work. As we look ahead, we remain committed to our mission of building resilient, self-reliant communities that can overcome the challenges they face and achieve lasting progress. I am deeply grateful to our dedicated team, our partners, and the communities we serve for their support and collaboration. Together, we will continue to create a brighter, more equitable future for all.



# Vision, Mission & Approach



## Vision:

**Parmarth** envisions a society where all people have access to basic amenities like water and sanitation, improved livelihoods through a community-led approach, education, and healthcare, enabling them to realize their full potential.



## Mission:

**Parmarth** is committed to the capacity building and empowerment of deprived and vulnerable communities, working to enhance their access to and the quality of public services in core sectors.



## Approach:

Parmarth's approach is encapsulated in the guiding principle of "Preparing People to Help Themselves." The organization believes in empowering individuals and communities with the knowledge, skills, and resources they need to take charge of their own development. This approach ensures that every intervention is not just a temporary solution but a step towards sustainable self-reliance. Parmarth integrates this philosophy into every project and initiative, ensuring that the communities they work with are active participants in their own progress and development.



# Who We Are?

## Parmarth Samaj Sevi Sansthan's Journey of Comprehensive Development

Parmarth Samaj Sevi Sansthan (PSSS) has been a beacon of hope and transformation in the drought-stricken Bundelkhand region of Uttar Pradesh and Madhya Pradesh since its inception in 1996. At the core of Parmarth's philosophy is the belief in "Preparing People to Help Themselves." We foster participatory processes, ensuring that community members are actively involved in decision-making and implementation of projects. This approach not only builds capacity but also instils a sense of ownership and responsibility among community members. The organisation works with various stakeholders, including institutions, corporate entities, government agencies, local communities, and individuals, to provide timely interventions in water conservation, environmental protection, village development, sustainable agriculture, river rejuvenation, sanitation and waste management, women's empowerment, education, and skill development. Parmarth's theory of change is to **"Facilitate and Empower the Process"** in a community.



1996



# Key Areas Of Work

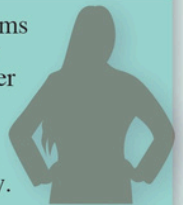
## Water Sustainability

Parmarth is actively involved in initiatives aimed at water conservation and management. This includes forming Jal Saheli's and Pani Panchayats to promote community participation in water resource management.



## Capacity Building

The organisation conducts training programs to empower local communities, especially women, through exposure visits and gender issue training. This capacity-building approach helps enhance the skills and knowledge of participants, enabling them to address their own challenges effectively.



## Community Based Organisation

Parmarth supports the formation of community-based organisations comprising Pani panchayat, Jal Saheli Cadres, SHG and others, which facilitate financial independence and entrepreneurship among women. These groups provide a platform for members to save, invest, and access credit, thereby improving their economic status.



## Advocacy And Awareness

We also engage in advocacy efforts to raise awareness about various social issues affecting marginalised communities, focusing on creating qualitative improvements in their lives.



**Through these initiatives, Parmarth Samaj Sevi Sansthan aims to foster sustainable development and empower communities, particularly women, to take charge of their own development and well-being.**



# Results Achieved

Parmarth has achieved impressive results which includes:

Rejuvenation of more than

**136** Chandela Tanks

Construction of more than

**1000** Other Water Structure

Rejuvenation of

**4** Rivers

Developed a cadre of

**1530** Jal Saheli

Formation of

**600** Pani Panchayat committees

Capacity Building

**150** VWSC Committees.

Water Saved Per Year

More than  
**30 Billion**

Established

**2000** Kitchen Garden

Mobilised for Adoption  
Best Farming Practices

Over  
**25,000** Farmers

Increased irrigation  
Capacity to

**10,000+** Hectare

Increased Agriculture  
Productivity

**15-25%**



# Core Values

At the core of Parmarth Samaj Sevi Sansthan mission are the values that guide every action and decision the organization undertakes.

## Equality among people



It is a fundamental principle, ensuring that all individuals, regardless of their background, have equal opportunities to thrive.

## Commitment And Courage

The driving forces behind Parmarth's initiatives, as the organization persistently works to overcome challenges and create lasting change.



## Development With Dignity



The organization is deeply committed to Development with Dignity, recognizing that every person deserves respect and the right to improve their lives in a manner that upholds their self-worth.

## Conviction

in the potential of every community fuel Parmarth's effort, fostering a belief that sustainable development is achievable communities are empowered.



## Transparency and Accountability



They are paramount, ensuring that Parmarth's operations are open, honest, and responsible, building trust and credibility among the communities they serve and their partners.



At Parmarth Samaj Sevi Sansthan, we are guided by a deep-seated belief in the power of **Ecological Restoration** as a vital process for assisting the recovery of ecosystems that have been degraded, damaged, or destroyed.

We are committed to fostering **Social Equality**, ensuring that every individual, regardless of their socioeconomic status, has equal access to rights, social services, and opportunities. We strive to empower the poor and deprived by enabling them to improve their lives through access to government schemes and benefits.

Our focus on **Enhancing Livelihood Opportunities** is driven by the goal of creating sustainable economic initiatives for marginalized communities, building their capacity to demand and access their entitlements.

**Women Empowerment** is also central to our mission; we recognize the importance of gender-responsive projects and programs, and we incorporate this approach throughout our work.

Through our **Gender Smart Initiatives**, we ensure that women's needs and perspectives are integral to the design, implementation, and evaluation of all our programs, thereby promoting greater gender equity and empowering women to lead better lives.





# Key Strategies

**Mobilizing and organizing community** groups with a focus on Dalits, Adivasis, and women.

**Building knowledge and capacity** among Community-Based Organizations (CBOs) and local communities.

**Model demonstration and replication** through socially excluded groups, with an emphasis on women.

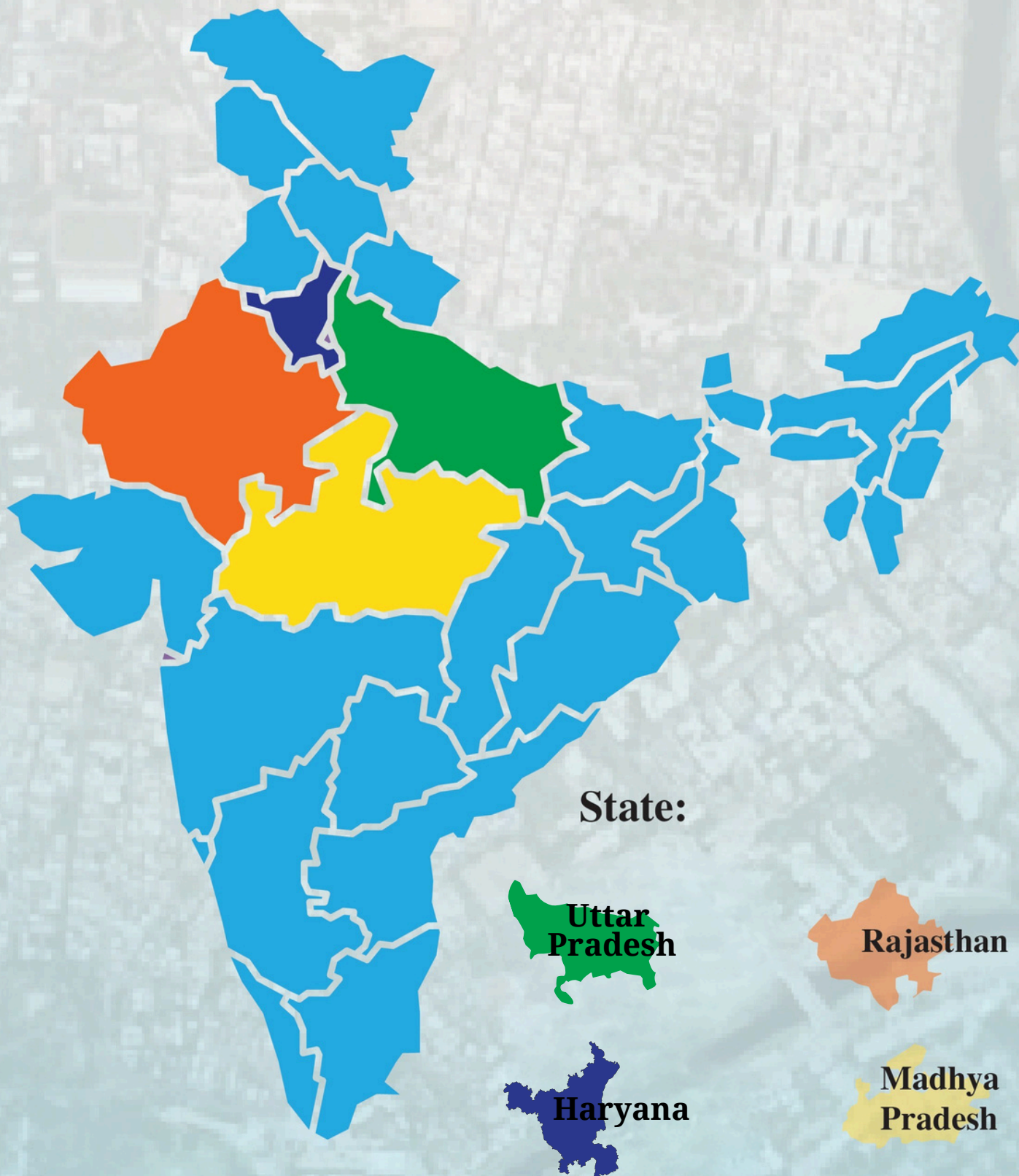
**Policy advocacy** to ensure that marginalized voices are heard in decision-making processes, leading to systemic change.

**Convergence and multi-sector engagement** to create comprehensive, cross-sector solutions.

**Public engagement and campaigning** to raise awareness and garner support for key issues.

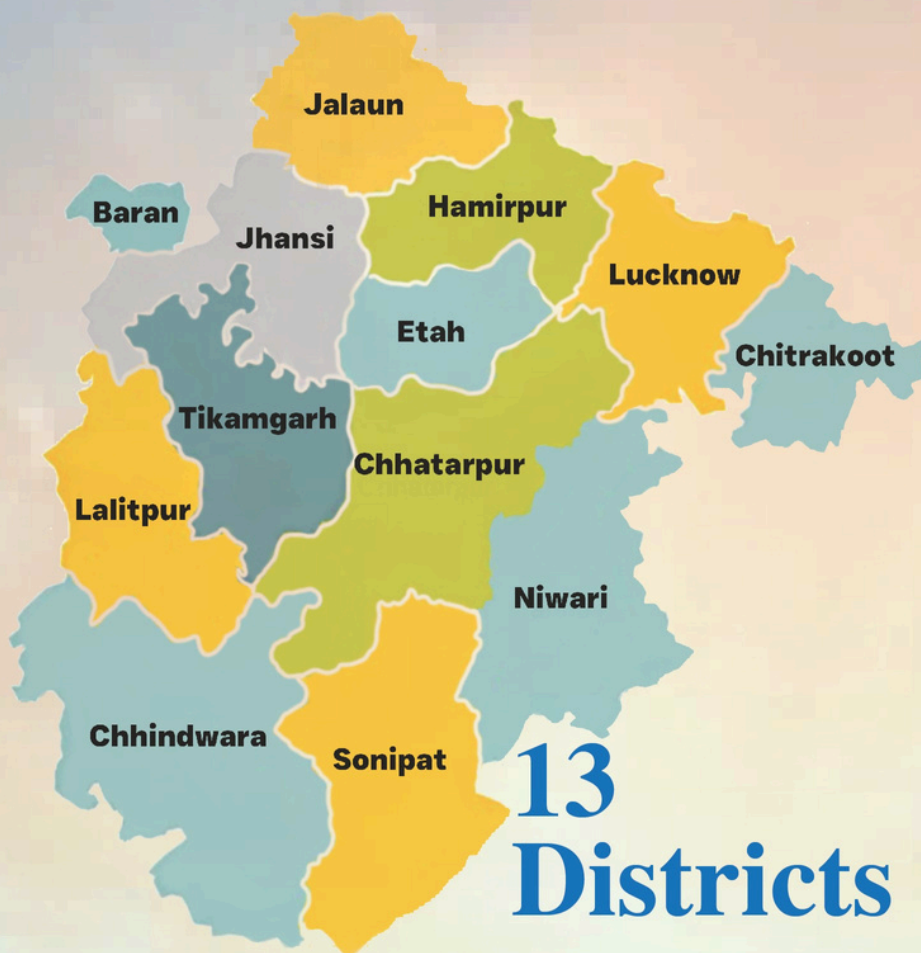


# Geographical Area/ Presence





# District:



Presently,  
Parmarth operates:

**04** State Offices

**16** Field Offices

Supported by a  
dedicated team of:

**120**

Full-Time Staff Members  
across all locations.

Covering:

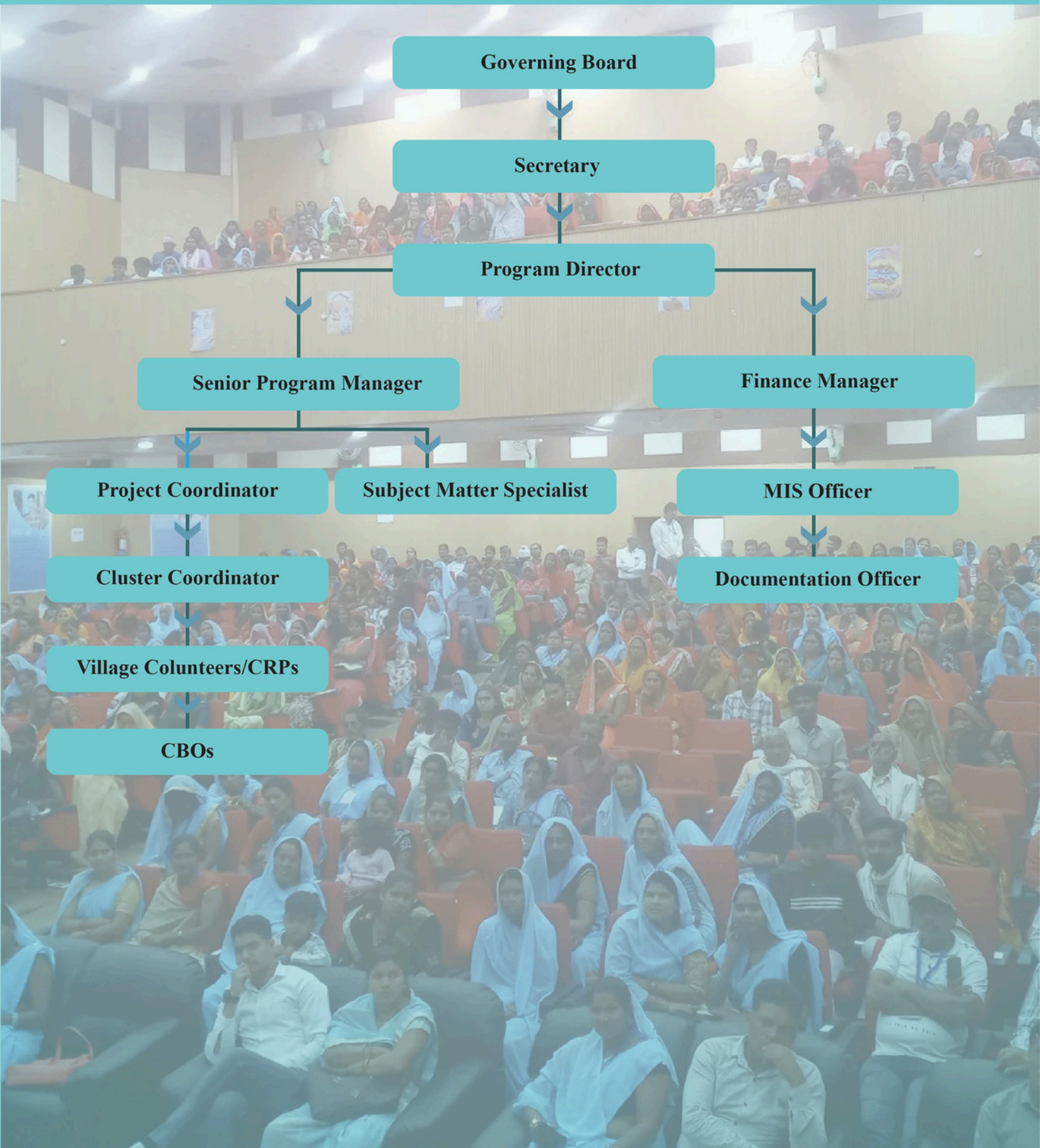
**686**  
Villages

**25**  
Blocks





# Team Structure





# Partnerships & Collaborations



**WELT  
HUNGER  
HILFE**

**NOR⇌C**

NORWEGIAN AGENCY FOR  
EXCHANGE COOPERATION



**CHANDRA**  
FOUNDATION



सत्यमेव जयते

जल शक्ति मंत्रालय  
MINISTRY OF  
**JAL SHAKTI**



*Hindustan Unilever Limited*



**WORLD BANK GROUP**

**theflowpartnership**



**SAVE INDIAN  
FARMERS**



**Asha**  
for Education  
Bringing hope through education

**POLARIS**



**UPS & CS**

उत्तर प्रदेश राज्य एड्स नियंत्रण सोसायटी



# Key Focus Areas / Programmatic Interventions

## Water Management

Recognizing the critical importance of water management, Parmarth Samaj Sevi Sansthan has implemented a series of strategic interventions aimed at conserving water, rejuvenating water bodies, and promoting sustainable agricultural practices. These efforts are essential in ensuring year-round access to water, improving agricultural productivity, and building resilience against water scarcity.

### Key Interventions and Impact:

Parmarth's Water Management initiatives have centred around three core areas: water conservation and storage, sustainable agricultural practices, and community empowerment. Across multiple regions, the organization has undertaken the rejuvenation of water bodies through extensive desilting operations, significantly increasing water storage capacity and improving groundwater recharge. These efforts have resulted in the creation and restoration of ponds, check dams, and other water harvesting structures, collectively enhancing the water availability for agricultural and domestic use.





Parmarth's Water Management initiatives have centred around three core areas: water conservation and storage, sustainable agricultural practices, and community empowerment. Across multiple regions, the organization has undertaken the rejuvenation of water bodies through extensive desilting operations, significantly increasing water storage capacity and improving groundwater recharge. These efforts have resulted in the creation and restoration of ponds, check dams, and other water harvesting structures, collectively enhancing the water availability for agricultural and domestic use.

In promoting sustainable agricultural practices, Parmarth has educated and empowered local farmers on efficient water use techniques, rainwater harvesting, and artificial recharge methods. These practices have not only reduced the cost of cultivation but have also led to a significant increase in crop yields and agricultural productivity. The adoption of these practices has been further supported by the distribution of water-saving technologies and tools, reducing the overall water footprint of farming activities.

Community engagement and empowerment have been central to Parmarth's approach. The formation of Community-Based Organizations (CBOs), PaniPanchayats, and the active involvement of women, particularly through the "Jal Saheli" initiative, have fostered a strong sense of ownership and responsibility towards sustainable water management.

## **Community-Led Transformation:**

*PSSS and Sahariya Tribe Tackle Water Scarcity in Rajpur*

*Parmarth Samaj Sevi Sansthan (PSSS), in partnership with NABARD, addressed the critical water scarcity in Rajpur, a village in Lalitpur's drought-prone Bundelkhand region. Despite Rajpur's proximity to the Matatila Dam, the Sahariya tribal community, particularly 42 families living on a hill, struggled with unsafe drinking water due to contamination in their well. Government efforts through the Har Ghar Nal Yojana were ineffective, leaving the community reliant on distant and unsafe water sources.*

*Through the Wadi project, which had already supported tree plantation for 40 families, Parmarth helped the community take ownership of resolving the water crisis. The Village Planning Committee proposed repairing the well, and the Sahariya community agreed to contribute labor through Shramdan (voluntary work). Parmarth provided key materials, including cement, sand, and funding for a mason. The combined effort resulted in the successful repair of the well and the construction of an access road.*

*This collaborative project brought clean drinking water to 42 Sahariya families, significantly reducing the incidence of waterborne diseases and alleviating their dependence on unsafe water sources. Parmarth's role in mobilizing the community not only solved the immediate water crisis but also fostered a sense of unity and pride, demonstrating the power of community-driven, sustainable solutions in resource-constrained areas.*



जल संरक्षण हमारा  
दायित्व ही नहीं,  
कर्तव्य भी है।  
— पारमार्थ समाज सेवी संस्था, तालाब रोड



# Jal Sahelis and Pani Panchayat

## Key Initiative

Jal Sahelis and Pani Panchayats are key initiatives of Parmarth Samaj Sevi Sansthan, a non-governmental organization working in the Bundelkhand region of India. These initiatives aim to engage women in water resource management and conservation efforts at the community level.

## Empowering Women as Water Stewards

Parmarth Samaj Sevi Sansthan has achieved significant outcomes through its tireless efforts in water conservation in the drought-prone Bundelkhand region of Uttar Pradesh and Madhya Pradesh over the past 25 years.

## Formation of Jal Sahelis

Parmarth has created an amazing model of Jal Sahelis - trained over 1530 Jal Sahelis (women water volunteers) across several districts in Uttar Pradesh and Madhya Pradesh. These women play a crucial role in advancing water security and asserting water rights in their villages and are actively associated with Parmarth. These Jal Sahelis consistently work for the conservation and revival of ponds, ensure maintenance of hand pumps, and ensure constant supply of drinking water to villagers. They also work for protection of old water structures and construction of new ones.

## Key Responsibility Of Jal Sahelis

- Advocating for water rights and entitlements through awareness generation.
- Actively participating in village water development planning.
- Preparing water user master plans
- Liaising with local authorities to address water issues
- Promoting water conservation and restoring water resources
- Checking open defecation and promoting kitchen gardens





# Recognition And Scaling Up

Many Jal Sahelis have been recognized for their efforts, winning awards like Catch the Rain, Water Warrior and Jal Prahri from the government. One such inspiring Jal Saheli is Geeta from Lalitpur district. Geeta has been actively involved in reviving traditional water bodies, ensuring proper functioning of hand pumps, and promoting water conservation in her village. Her dedication has earned her the Water Warrior Award from the government and recognition from UNDP.

## Inclusion in NCERT Textbooks

In a major breakthrough, Parmarth's successful community-based water conservation initiatives, particularly the "Jal Sahelis" model, have been included in the syllabus for students from 6th to 8th grades by the National Council of Educational Research and Training (NCERT), the apex educational body in India. This will help create awareness and understanding about water conservation among Indian students, the future of the country.



नदियों को बचाकर  
रखिये, प्रकृति की रक्षा  
कीजिये ।





# Pani Panchayat Model

## Community-Led Water Management

Parmarth Samaj Sevi Sansthan has pioneered the Pani Panchayat model, a village-level committee that addresses issues related to water management, conservation, planning, and accessing government entitlements in the drought-prone Bundelkhand region. This innovative approach empowers local communities to take charge of their water resources and ensure equitable access.

### Key Components of the Pani Panchayat Model

#### Formation of Pani Panchayats:

Parmarth has formed Pani Panchayats in every village where it works. These committees comprise community members, particularly women, who are actively involved in water-related decision-making.

#### Regular Meetings:

The Pani Panchayats hold regular meetings to discuss water-related issues, prepare water budgets with community participation, and conduct social audits. These meetings ensure transparency and accountability in water management.

#### Collaboration with Jal Sahelis:

The Pani Panchayats work closely with Jal Sahelis, the trained women volunteers who advocate for water rights and lead water conservation efforts at the grassroots level. The Jal Sahelis actively participate in Pani Panchayat meetings and help in decision-making.

#### Liaising with Authorities:

The Pani Panchayats serve as a bridge between the community and local authorities, such as government agencies and elected representatives. They advocate for the community's water rights and entitlements, ensuring that their voices are heard, and their needs are addressed.





# Impact of the Pani Panchayat Model



The Pani Panchayat model exemplifies a successful approach to community-based water management that not only addresses immediate water scarcity issues but also promotes social equity, women's empowerment, and sustainable practices. Through this model, Parmarth Samaj Sevi Sansthan has made significant strides in transforming the lives of vulnerable communities in Bundelkhand, creating a more resilient and self-sufficient society.



## Improved Water Security

The establishment of Pani Panchayats has led to enhanced water security in villages, reducing the distance and time spent by women in fetching water. This has a direct positive impact on their daily lives and overall well-being.

## Increased Agricultural Productivity

By ensuring equitable access to water, the model has contributed to improved agricultural productivity. Farmers can cultivate their lands more effectively, leading to increased food security and income stability.

## Empowerment of Women

The involvement of women in water management through the Jal Saheli initiative has empowered them socially and economically. Women have become leaders in their communities, advocating for their rights and contributing to decision-making processes.

## Community Cohesion

The Pani Panchayat model fosters community cohesion by bringing people together to work towards common goals. This collaboration enhances social bonds and promotes collective responsibility for resource management.

## Long-term Sustainability

By promoting sustainable practices and community ownership, the Pani Panchayat model ensures the long-term sustainability of water resources. This resilience is crucial in the face of climate change and increasing water scarcity.



# Recognition and Scaling Up

The success of the Pani Panchayat model has been recognized at the national level. As of 2024, Parmarth has formed more than 600 Pani Panchayats across the Bundelkhand region, engaging over 10 thousand women members.

The organization continues to scale up this model, empowering more communities to take charge of their water. Parmarth's holistic approach to water management has not only addressed the immediate challenges of water scarcity but has also laid the groundwork for long-term sustainability and resilience in the communities it serves.

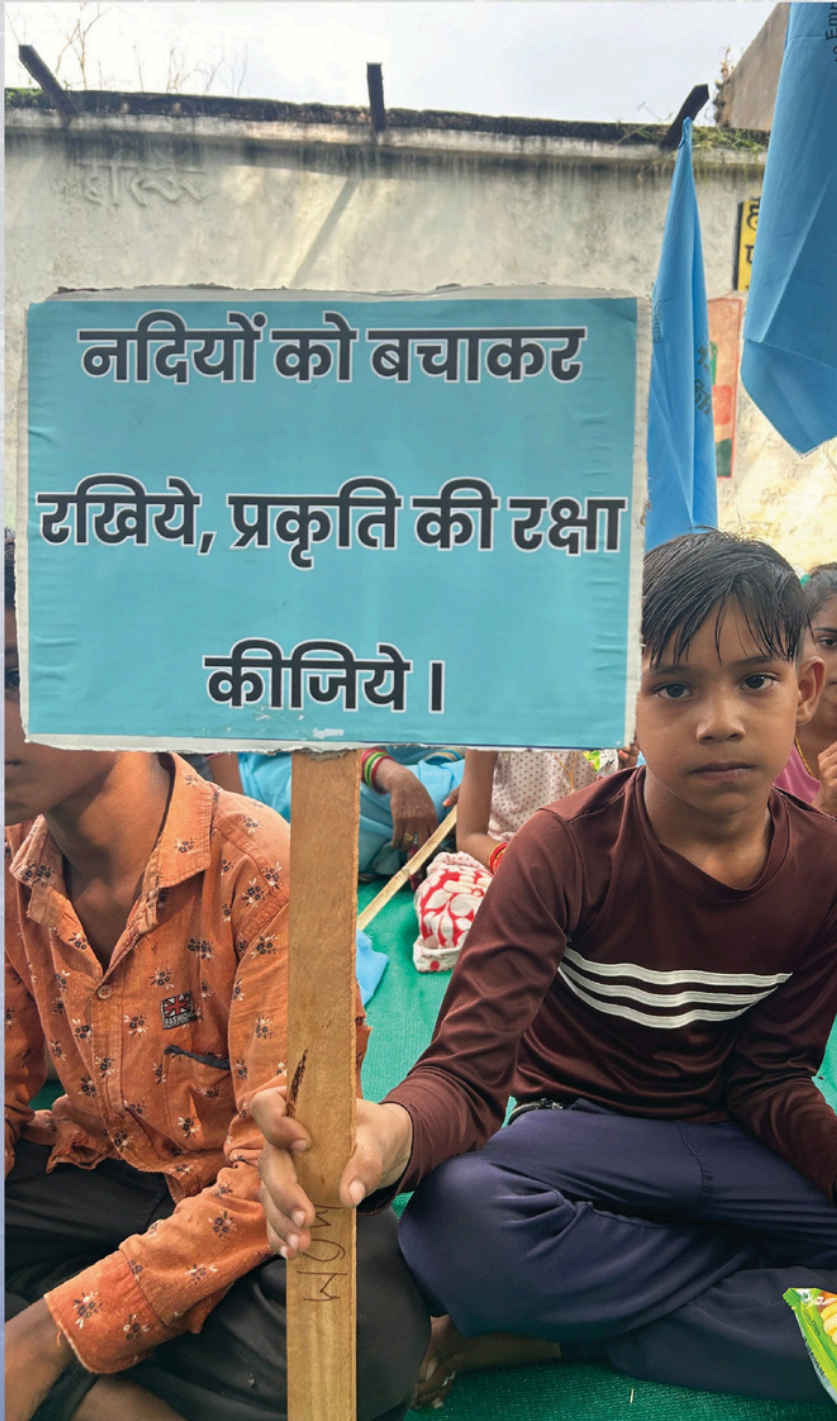




# Key Impact

Total 6,50,000 People and 1,35,200 Households impacted.

## Water Management



**11.69 billion Liters** of water was saved through demand and supply-side interventions.

More than **2,000 hectares** of land were covered through water management and agricultural activities.

Over **100,000 families** now have access to drinking water through pipeline, facilitated by strategic convergence efforts and direct interventions.

**Centre for Excellence** for small river rejuvenation is formed at Khajuraho.

Today the cadre of **Jal Sahelis is increased to 1530**, working as grass root water champions.

Two small rivers **Ghurai and Khodar are revived** engaging the community and other stakeholders increasing the number of revived rivers to four.

Training was provided to **14310 VWSC Members** Jal Saheli, farmers, and Pani panchayat members on various issues to empower the community and promote sustainable water management practices.

Prominent TV & Media channels have documented the journey and efforts of Jal Sahelis.



# Advocacy for rejuvenation of small rivers

Rivers are the lifeblood of ecosystems, communities, and economies, playing a crucial role in sustaining life and fostering biodiversity. However, rampant human activities, including deforestation, industrialization, and urbanization, have taken a toll on river health worldwide. In the Indian subcontinent, the Bundelkhand region has witnessed severe degradation of its river systems, exacerbating water scarcity and environmental challenges. River rejuvenation emerges as a critical strategy to restore the ecological balance, ensure water security, and foster sustainable development. One of the core areas of Parmarth's work is centred around advocacy for small river rejuvenation and engaging community for river rejuvenation Parmarth has so far been able to revive six small rivers. Parmarth has conducted National Consultation on small rivers for collective advocacy for small river rejuvenation at state and national level.

## Strategies for River Rejuvenation

Several water walks were organized by Parmarth to create awareness among the students, government officials, journalists, influencers, and conscious citizens about the importance of water sources, especially rivers and lakes and how they could be revived as well as the problems being faced by the communities.

Parmarth is also the secretariat of a national level campaign- Jal Jan Jodo Campaign impacting water rights and management. The campaign has a strong presence in 22 states of India. Its core objectives are advocacy for not only water issues but also the rights of the communities. Through the initiative, Parmarth has strengthened people's capacities to cope with climate change effects and to regain rights and responsibilities over traditional water resources and to create interest for regenerating these resources. This year we have been able to form Yamuna Sansad for uniting people to make efforts for making Yamuna River free from pollution. More than one lakh people joined this campaign.

Rivers are essential to ecosystems, communities, and economies, providing critical support for biodiversity and livelihoods. However, human activities such as deforestation, industrialization, and urbanization have severely impacted rivers globally. In Bundelkhand, India, this degradation has resulted in severe water scarcity and environmental challenges. Rejuvenating small rivers is emerging as a key solution to restore ecological balance, ensure water security, and promote sustainable development.

**Community Mobilization:**  
Parmarth engages local communities, particularly women volunteers known as "Jal Saheli's" or water friends, to lead conservation efforts.

**Check Dams:**  
The construction of check dams and other water harvesting structures improves water flow during lean seasons, often in partnership with local governments.

**Pollution Abatement:**  
Initiatives like oxidation ponds are implemented to reduce pollution from untreated sewage and waste dumping.

**Afforestation:**  
Planting trees along riverbanks helps prevent encroachment, retain soil moisture, and supports the overall health of river ecosystems.



# Overview of Jal Tara Techniques by Parmarth Samaj Sevi Sansthan

The Jal Tara techniques implemented by Parmarth Samaj Sevi Sansthan aim to tackle water scarcity and improve groundwater recharge in Bundelkhand, a drought-prone region in Uttar Pradesh and Madhya Pradesh. The approach integrates community participation, technical solutions, and women's empowerment to promote sustainable water management.

## Key Components

### Recharge Structures:

These are 6-feet deep, 4-feet square pits that collect rainwater to replenish groundwater, effectively addressing water scarcity during dry periods.

### Community Involvement:

Local farmers actively engage in constructing and maintaining these structures, fostering a collective sense of responsibility and ownership.

### Educational Outreach:

Successful water management practices are included in educational programs, encouraging sustainability from a young age.

### Agricultural Benefits:

Enhanced groundwater levels lead to increased crop yields and reduced waterlogging, benefiting the farming community.

### Women Empowerment:

The initiative integrates the "Jal Saheli's" program, training women as community leaders in water conservation.

### Sustainable Practices:

Techniques help restore the natural absorption capacity of the land, preventing soil erosion and improving land quality.





# Addressing Climate Change through Community Action

Climate change has become one of the most critical challenges of our time, directly affecting human lives, agriculture, and ecosystems. Rising temperatures, shifting weather patterns, and increasing water scarcity have led to reduced crop production, changes in water usage patterns, and the degradation of forests. Recognizing these pressing issues, Parmarth Samaj Sevi Sansthan has taken proactive steps to mitigate the adverse effects of climate change and promote sustainable practices for the benefit of both current and future generations.

## Creating Awareness for Climate Action

Parmarth believes that knowledge is the first step toward change. The organization has been actively engaging with communities to raise awareness about climate change, its impacts, and the necessary actions to combat it. Through campaigns, and educational programs, Parmarth has empowered individuals with the knowledge to make environmentally conscious decisions. These efforts aim to foster a culture of responsibility and collective action to address climate challenges at the grassroots level.

## Large-Scale Tree Plantation Drives

To combat deforestation and rising temperatures, Parmarth has done extensive tree plantation initiatives tailored to the local climatic needs. These efforts aim to restore green cover, enhance biodiversity, and mitigate the heating effect. Tree canopies not only reduce surface temperatures but also play a vital role in carbon sequestration, improving air quality, and providing shelter for various species. By mobilizing local communities, schools, and volunteers, Parmarth has turned tree plantation into a collaborative and impactful activity.





## Promoting Climate-Resilient Farming

Agriculture, being highly vulnerable to climate change, requires innovative solutions to maintain productivity while conserving resources. Parmarth has introduced advanced agricultural methods that focus on using less water without compromising crop yields. Techniques such as drip irrigation, mulching, and the use of drought-resistant crop varieties are some of the practices promoted. The organization also emphasizes the use of green manures to enhance soil carbon sequestration, improving soil fertility and combating climate change at the same time.

Parmarth actively integrates technological innovations to enhance its environmental impact. From introducing climate-smart tools for farming to leveraging digital platforms for spreading awareness, the organization ensures its initiatives are effective and scalable. These efforts aim to provide long-term solutions to mitigate climate change while supporting the livelihoods of local communities

## Integrating the Climate and Crop Cycles

Parmarth has adopted a holistic approach by linking the climate cycle with the crop cycle. This involves educating farmers about seasonal patterns and helping them adapt their cropping schedules accordingly. By aligning agricultural practices with climatic conditions, farmers can optimize resource use, reduce vulnerability to extreme weather events, and improve overall productivity. The initiative also focuses on reducing greenhouse gas emissions from agricultural activities through sustainable practices.

## River Rejuvenation and Water

Recognizing the vital role of water in sustaining life and agriculture, Parmarth has undertaken river rejuvenation projects. These efforts include desilting, watershed management, and the creation of water retention structures to recharge groundwater. Such measures ensure a sustainable water supply for farming and daily use, even in the face of changing rainfall patterns.

Parmarth Samaj Sevi Sansthan's multi-pronged approach to addressing climate change reflects its commitment to fostering sustainable communities. By focusing on awareness creation, tree plantation, climate-resilient farming techniques, and integrating climate and crop cycles, the organization not only addresses the immediate effects of climate change but also builds resilience for future generations.





# Agriculture and Livestock Development

Parmarth Samaj Sevi Sansthan is committed to promoting sustainable agricultural practices and effective livestock management to enhance food security, increase income generation, and build resilience against the challenges posed by climate change. Through a series of targeted interventions, the organization has empowered farmers and livestock owners with modern techniques and sustainable practices that have transformed agricultural and livestock productivity across several regions.

## Key Interventions and Impact:

Parmarth's efforts in Agriculture & Livestock have centred around three main areas: sustainable agricultural practices, livestock development, and community empowerment. By training farmers in modern farming techniques, the organization has significantly improved crop yields and adapted agricultural practices to meet the challenges of a changing climate. These interventions have led to increased income for farming communities and greater food security.

In the realm of livestock development, Parmarth has focused on improving rearing practices and providing essential veterinary care. These efforts have enhanced the productivity of livestock, particularly in economically disadvantaged communities, where livestock serves as a critical source of income and food security. The promotion of sustainable practices in fodder management and water conservation has also reduced the environmental impact of livestock farming, ensuring that these practices can be maintained over the long term.





Through these comprehensive interventions, Parmarth has achieved the following significant outcomes:

### Formation and Strengthening of Farmer Collectives

Increased awareness and progress in forming Farmer Producer Organizations (FPOs), with the selection of the Board of Directors, positioning farmers for collective management and marketing benefits.

### Community Empowerment and Resilience

By fostering community collaboration and resource-sharing, Parmarth's interventions have strengthened the social fabric of farming and livestock communities. Initiatives such as the creation of kitchen gardens and the establishment of milk collection centers have not only improved nutritional intake and provided new income streams but also enhanced the overall resilience of these communities to economic and environmental challenges.

### Enhanced Water Management & Agricultural Productivity

Training farmers in modern techniques such as integrated pest management, organic farming, and advanced irrigation methods has led to notable improvements in crop yields. For example, sustainable practices in mango farming have resulted in increase in yields and a boost in farmer incomes, transforming hectares of land into productive, environmentally sustainable agricultural zones.

### Improved Livestock Management

The introduction of sustainable goat farming practices has been particularly impactful in marginalized communities. Improved livestock management and veterinary support have increased household income and reduced livestock mortality, while empowering women with greater economic independence.

### Environmental Stewardship

The adoption of sustainable agricultural and livestock practices has had a positive impact on the environment. Efforts in soil and water conservation, organic farming, and sustainable livestock rearing have contributed to greater environmental sustainability and long-term agricultural viability.

Parmarth's holistic approach to agriculture and livestock development has empowered communities, improved livelihoods, and fostered sustainable practices that will benefit future generations. The organization's work in this area is a testament to the power of integrating modern techniques with traditional knowledge to create resilient and sustainable agricultural systems.



# Key Impact

**Total 6,50,000 People and 1,35,200 Households impacted.**

Through agricultural interventions, an additional production **1,729 tons** of agricultural and biomass resources was achieved.

Through Jal Chaupals, campaigns, and meetings, more than **200,000 people** were made aware of various socio-economic and agricultural issues.

More than **4000 Farmers** embraced improved agricultural practices, enhancing productivity and sustainability in their farming methods.

**7,500 farmers** were linked to various government schemes, resulting in benefits of over ₹1.5 crores.

Direct livelihood support was provided to **295 households** while over **950 households** were connected to livelihood schemes.

Through the initiatives undertaken by Parmarth, more than **50,000 additional man-days** man-days were generated, both directly and indirectly.





## ***Revitalizing Tribal Agriculture:***

*The Impact of the Wadi Project on Sahariya Farmers in Lalitpur – Agriculture.*

*In Vadibar village, Lalitpur district, Uttar Pradesh, Shri Badam Sahariya, a tribal farmer, struggled with low agricultural productivity on his rocky, rain-fed land. His livelihood was unsustainable, forcing him to rely on loans from moneylenders. However, through the Wadi Project, part of the Integrated Tribal Development Program (ITDP) led by Parmarth Samaj Sevi Sansthan in partnership with NABARD, Badam gained access to training in sustainable farming, organic methods, and agroforestry.*

*Then, he planted 56 guava, 56 lemon, and 200 carissa plants on his one-acre land, along with vegetables like tomatoes, peas, radishes, and spinach. This new approach allowed him to earn 8,000–10,000/- Rs in his first season, providing a steady income to meet his family's needs without relying on loans. With his success, Badam plans to expand vegetable farming and nurture his fruit trees, securing a sustainable livelihood for the future.*

## ***Empowering Lives through Poultry Farming:***

*The Success Stories of Munni and Bhagwati Sahariya – Livestock Development.*

*Munni Sahariya, a landless labourer from Kadesra Kala village in Lalitpur district, struggled to make ends meet until Parmarth Samaj Sevi Sansthan, through the Wadi Project, provided her with 50 chicks and feed for poultry farming. Balancing the business with her labour work, Munni's income grew to INR 40,000–50,000 annually, giving her financial stability. This allowed her to send her children to school and avoid seasonal migration. Today, she manages her poultry business independently and continues to expand it, bringing security and happiness to her family.*

*Similarly, Bhagwati Sahariya, also from Kadesra Kala, faced similar hardships. With no land or steady income, she and her husband migrated for work. Selected for the Integrated Tribal Development Program, Bhagwati received 50 chicks and feed. Within six months, her income reached INR 50,000, and she now earns INR 50,000–60,000 annually. This steady income enabled her to keep her children in school, improve their living conditions, and stay in the village without migrating for work.*

*Both Munni and Bhagwati's success stories highlight the transformative impact of small-scale poultry farming. With support and resources, they have gained financial independence, improved their families' futures, and contributed to rural development by staying in their communities.*

Both Munni and Bhagwati's success stories highlight the transformative impact of small-scale poultry farming. With support and resources, they have gained financial independence, improved their families' futures, and contributed to rural development by staying in their communities.



# Education

Parmarth Samaj Sevi Sansthan's education initiatives are dedicated to increasing access to quality education for children, particularly in underserved and marginalized communities. The organization has focused on improving school infrastructure, supporting teacher training, and fostering community involvement in education to ensure that children receive both academic and holistic development opportunities. These efforts are aimed at overcoming barriers to education and creating an inclusive, supportive learning environment for all children.

## Key Interventions and Impact:

Parmarth's approach to education has been multifaceted, addressing both the physical and social aspects of learning environments. By enhancing school infrastructure and supporting teacher training, the organization has worked to create a more conducive environment for learning. Additionally, Parmarth has placed a strong emphasis on community involvement, understanding that the support of parents, community leaders, and local organizations is crucial for sustained educational success.

One of the core interventions has been the establishment of alternative education centers, known as Siksha Sanskar Kendras, which provide access to education for children who face barriers such as lack of documentation (like Aadhar card), discrimination, and child labor. These centers have been instrumental in enrolling children in formal schools and providing supplementary education to ensure they keep up with their peers. The project has also focused on building leadership skills among children and sensitizing the community to the importance of education and child rights.





Through these strategic interventions, Parmarth has made significant strides in improving educational access and quality for children in underserved communities:

### Increased School Enrollment and Access:

The establishment of Siksha Sanskar Kendras has provided alternative educational opportunities, leading to the enrollment of 282 children in government schools and supplementary education for 625 children. These efforts have bridged the gap for children who might otherwise have been excluded from formal education.



### Empowerment through Leadership and Community Involvement:

The formation of 21 Bal Samoochs (children's groups) has empowered young students to take on leadership roles and advocate for their rights, reducing instances of discrimination and fostering a more inclusive school environment. Additionally, the sensitization of 1,377 community members on the importance of education and child rights has created a more supportive community framework for children's education.



### Improved Learning Environment:

Training provided to 78 teachers has enhanced their ability to create better learning environments, which is critical in ensuring that children not only attend school but also receive a quality education that supports their overall development.





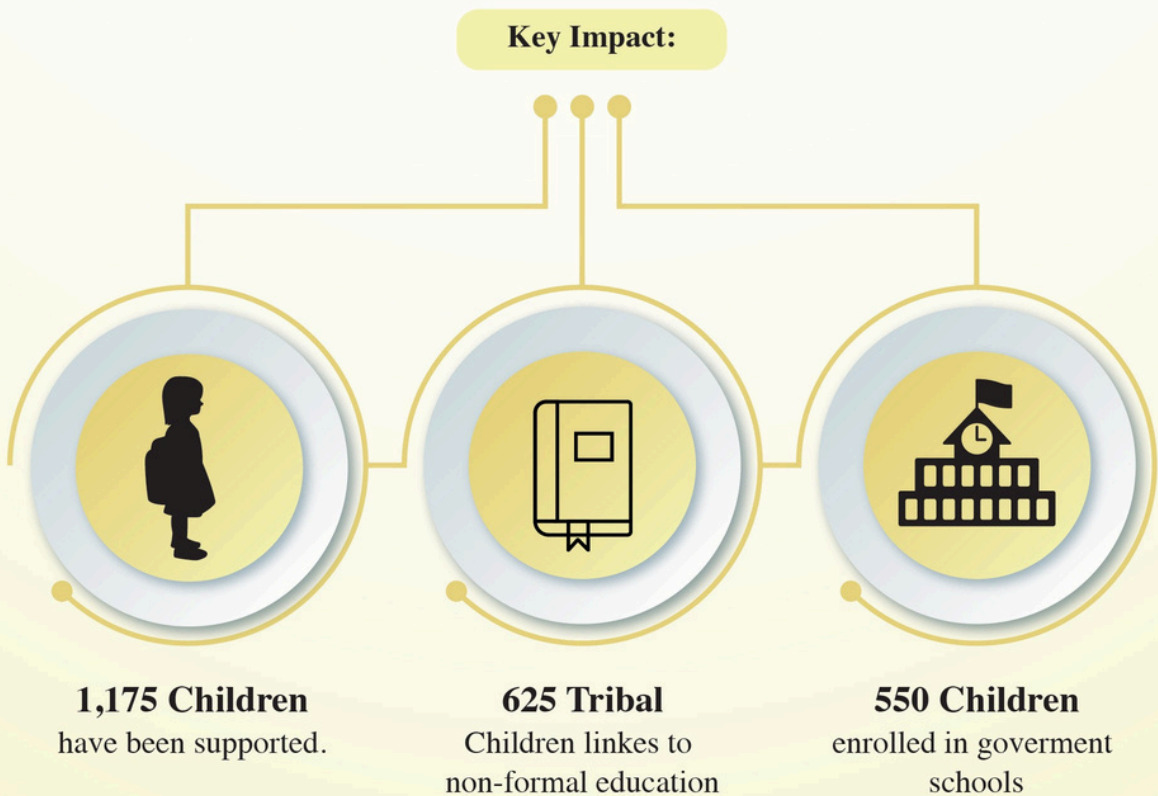
Parmarth's education initiatives have successfully tackled some of the most pressing barriers to education in deprived and marginalised tribal communities. By focusing on infrastructure, teacher support, and community engagement, the organization has created an environment where children can thrive academically and develop the skills needed for a brighter future. The holistic approach ensures that education is not just about academic success but also about nurturing well-rounded, confident individuals who are prepared to contribute positively to society.

### Schools in Poorest Communities

*Powered by Children's Enthusiasm.*

*In the remote hamlets of Jhansi district, Uttar Pradesh, where migrant labour and poverty disrupt education, Parmarth Samaj Sevi Sansthan has initiated informal schools for the poorest communities. These schools help children maintain educational continuity and transition into mainstream schools. Nearly 200 children who had either dropped out or never enrolled have resumed their education.*

*Children have been successfully engaged by the schools through the use of games and interactive learning strategies modelled by the Eklavya organization. Teachers like Manisha Prajapati and Rinki Bhartare are committed to offering flexible education, when feasible, they even hold classes outside under the trees. Students continue to study and play sports with enthusiasm in spite of obstacles like migration and a lack of formal facilities. Six Sahariya indigenous girls were recently chosen to attend Kasturba Gandhi model schools, demonstrating the success. These initiatives demonstrate the potent influence of community-centered education in conquering challenges.*





# Health, Sanitation and Nutrition

Parmarth Samaj Sevi Sansthan has been at the forefront of improving health outcomes in rural communities, with a particular focus on women and children. The organization's interventions encompass essential medical services, preventive healthcare, nutrition improvement, and the promotion of sanitation and hygiene practices. These efforts aim to address both the immediate health needs of the population and foster long-term behaviour change that supports healthier communities.

## Key Interventions and Impact:

Parmarth's health initiatives are built around providing accessible healthcare services and promoting preventive measures that target the root causes of health issues in rural areas. The organization conducts health camps, offering crucial medical services and screenings, particularly in remote areas where healthcare access is limited. In addition, Parmarth's focus on addressing malnutrition, especially among children, has been pivotal in improving overall health and development outcomes.

In parallel, Parmarth has been actively raising awareness about sanitation and hygiene through various innovative approaches. By integrating Water, Sanitation, and Hygiene (WASH) practices into its programs, the organization has empowered communities to adopt healthier habits, thereby reducing the prevalence of waterborne diseases and other hygiene-related health issues.

Through these comprehensive health, sanitation, and nutrition initiatives, Parmarth has achieved the following significant outcomes:

### Promotion of Sustainable WASH Practices:

The UL4BC (Universal Languages for Behaviour Change) project exemplifies Parmarth's commitment to fostering sustainable WASH practices. Through creative methods like Football for WASH and art-based activities, the project engaged students, teachers, and community members, resulting in increased awareness and long-term adoption of improved hygiene and sanitation behaviors. The enhancement of WASH infrastructure in schools has further solidified these gains, ensuring that the impact extends beyond the project's duration.



Parmarth's holistic approach to health, sanitation, and nutrition has not only addressed immediate healthcare needs but has also laid the foundation for long-term improvements in community health/Sanitation & hygiene. By integrating healthcare services with efforts to promote sustainable WASH practices and improve nutrition, Parmarth has created a comprehensive framework that supports the well-being of rural populations, ensuring healthier futures for generations to come.



## **Empowering Change:**

### **How Football for Wash Overcame Sanitation Barriers in Kiratpura**

The "Football for Wash" program in Kiratpura showcases the organization's commitment to addressing water scarcity and sanitation through education and direct intervention. Ramkumari, a motivated 6th-grade student, embraced lessons on hygiene, including handwashing, water protection, and toilet use. However, her family struggled to complete their household toilet due to severe water shortages and financial challenges.

Recognizing the need for change, Lokendra Singh, the program's District Coordinator, personally engaged with Ramkumari's family. He visited them on their farm, educating them on the health risks of open defecation and its environmental impact. Through his persistence, the family was convinced to prioritize sanitation and completed their toilet despite resource challenges.

This success story, driven by the organization's outreach efforts, led to the family's regular use of the toilet and inspired broader water conservation and hygiene practices in the school. The initiative reflects the organization's pivotal role in creating sustainable community change.

Over **75,000 plants** were planted, benefiting more than **2,000 people**.

**1,631 kitchen** gardens were established, benefiting over **8,000 individuals** with access to fresh vegetables.

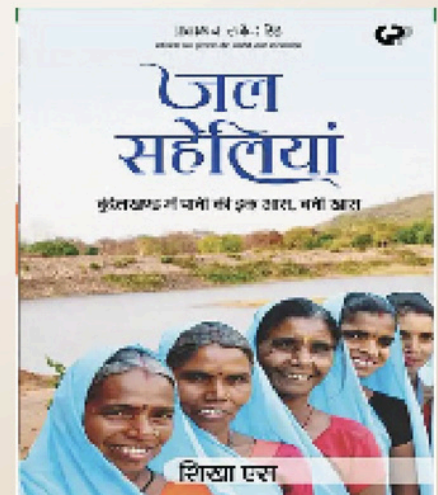
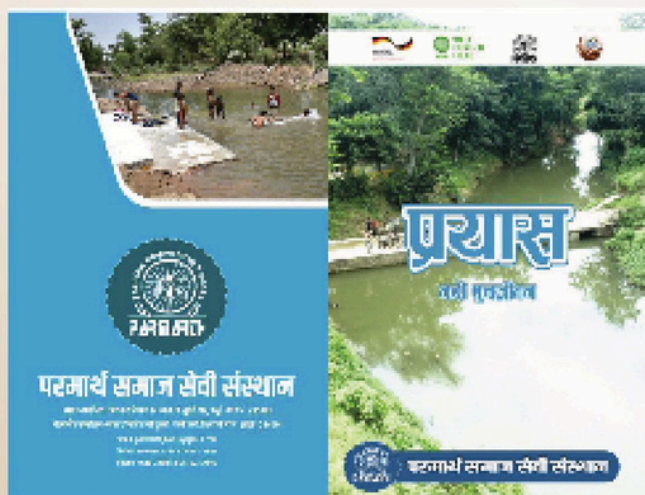
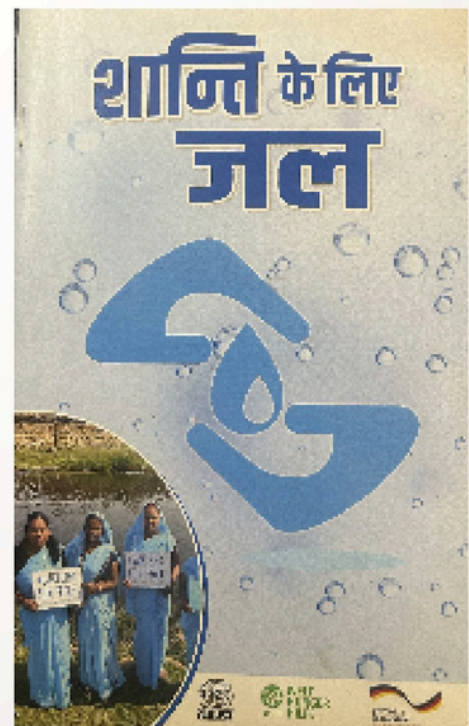
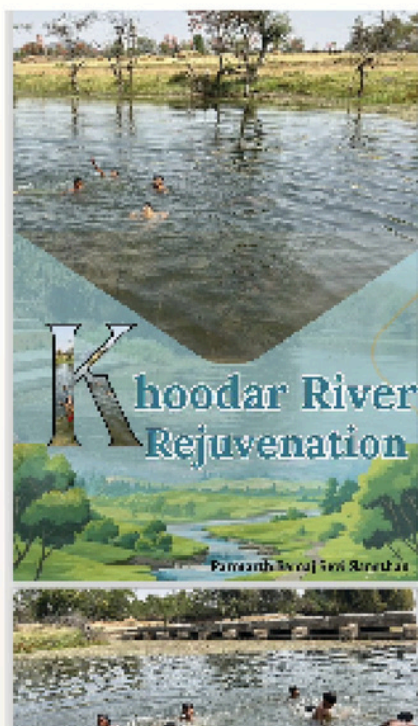
#### **key impacts**

Over **4,000 individuals** benefited from the health program, gaining access to essential healthcare services and resources.

**70 nutrition gardens** were established, benefiting **233 families** with fresh vegetables and generating over **20 lakhs** rupees in vegetable sales.



# Publications

















# List of Approved Projects During the Year: 2023 - 2024

Sr. No.	Grant Title	Donor
1	IMPROVING ACCESS TO SAFE DRINKING WATER THROUGH SOLAR DISINFECTION WITH WADI	WELTHUNGERHILFE
2	MICRO CREDIT FOR GOAT	ASIA INITIATIVE
3	WATER SCHOOL INDIA (BUILDING OF PONDS, PLANTING OF TREES AND TRAINING OF VILLAGERS)	THE FLOW PARTNERSHIP
4	JAL SAMRIDDHI	CARBON IMPACT CAPITAL
5	COMMUNITY KITCHEN GARDEN SUSTAINABLE DEVELOPMENT	SAVE INDIAN FARMER'S
6	DESIGN AND PREPARATORY ARRANGEMENTS FOR SPECIAL PURPOSE VEHICLE FOR AGRI WATER ACCELERATOR IN UTTAR PRADESH	THE WORLD BANK GROUP
7	SUSTAINABLE AGRICULTURE RENEWAL THROUGH INNOVATIVE IDEAS EXCHANGE PROGRAM' (SARTHI)	NORWEGIAN AGENCY FOR EXCHANGE COOPERATION (NOREC)
8	STRENGTHENING ACCESS TO EDUCATION FOR CHILDREN OF SAHARIA TRIBES" (SABAL)	KINDERNOTHILFE E.V.
9	TOWARDS ENSURING QUALITY EDUCATION AMONG DEPRIVED CHILDREN WITH FOCUS ON SCS/STS & GIRLS CHILDREN	ASHA FOR EDUCATION
10	TULSI PATRA FOUNDATION MADHAUGARH	TULSI PATRA FOUNDATION
11	UL4BC TO ACCELERATE AND SCAL BEHAVIOUR CHANGE COMMUNICATION IN MADHYA PRADESH	WELTHUNGERHILFE
12	UPSCALING WASH-SYSTEMS-STRENGTHENING IN FRAGILE AND DEVELOPING CONTEXTS TO ACHIEVE SDG6	WELTHUNGERHILFE
13	WOMEN FOR WATER (WOW) STRENGTHENING WOMEN'S RIGHTS TO WATER IN INDIA	WELTHUNGERHILFE
14	ATAL BHUJAL YOJANA	GROUND WATER DEPARTMENT STATE GOVT. OF UTTAR PRADESH
15	REJUVENATION OF WATERBODIES IN CHHATARPUR DISTRICT, MADHYA PRADESH	ATE CHANDRA FOUNDATION
16	CHILDLINE JALAUNCHILDLINE JALAUN	MINISTRY OF WOMEN & CHILDREN DEVELOPMENT, GOVERNMENT OF INDIA THROUGH CHILDLINE INDIA FOUNDATION, MUMBAI



17	CHILDLINE JHANSI	MINISTRY OF WOMEN & CHILDREN DEVELOPMENT, GOVERNMENT OF INDIA THROUGH CHILDLINE INDIA FOUNDATION MUMBAI
18	PRABHAT	HINDUSTAN UNILEVER FOUNDATION
19	PRABHAT WATER STEWARDSHIP	HINDUSTAN UNILEVER FOUNDATION
20	MODEL ECO VILLAGE SUMERPUR	HINDUSTAN UNILEVER LIMITED
21	MODEL ECO VILLAGE SONIPAT	HINDUSTAN UNILEVER LIMITED
22	WATER STEWARDSHIP PROJECT ORAI	HINDUSTAN UNILEVER LIMITED
23	PROJECT PRAGATI	POLARIS FOUNDATION THROUGH MISSION SAMRIDDHI
24	TARGET INTERVENTION JHANSI	UTTAR PRADESH SYATE AIDS CONTROL SOCIETY
25	TARGET INTERVENTION JALAUN	UTTAR PRADESH SYATE AIDS CONTROL SOCIETY
26	WADI PHASE II (NABARD TRIBAL DEVELOPMENT FUND)	NABARD
27	WDF NEOLI BASA	NABARD
28	WDF RAGHOLI	NABARD
29	WDF_KHAKRON AND BARETHI	NABARD





# Reach Us



## Uttar Pradesh

### Jalaun

Opp Collectorate Gate No. 2  
Churkhi Road, Orai: 285001

### Jhansi

House no. 2/47 Cristian  
Campus Jhokan Bag

### Etah

Mata Mandir Road  
Asrauli District -Etah  
(U.P)-207001

### Jalaun

Sahid Bhagta Singh  
Inter College, Orai

### Lalitpur

Ward No. 5 Behind Anjani  
Maata Mandir, Anjani  
Nagar, Talbehath- 284126

### Madhaugarh

Parmarthpuram, Sihari Road  
District - Madhaugarh  
(Jalaun)- 285126

### Jhansi

663/A , 2nd street of Naja Hospital  
Shivaji Nagar, Kanpur Road :284001

### Sumerpur

Nr B.R Palace Station Road Sumerpur,  
District –Hamirpur (U.P)- 210502



## Madhya Pradesh

### Chattarpur

Behind School No.1 Nr Sun City  
Colony Opp Mukherjee Park,  
Chhatarpur- 471001

### Badamalhera

Opp Bajaj Agency,  
Gwara- 471313

### Chhindwara

Balaji Nagar Narsingh Road  
Near Abhimanyu hotel Khapabhat  
District- Chhindwara (M.P) 480001

### Teekamgarh

Near Airtel Tower,  
Mohangarh- 472101

### Niwari

Ward No. 6  
Lakshmi Garden -  
472442



## Haryana

### Gurugram

Ward no. 6,  
Farrukhnagar:122506

### Sonipat

Ambedkar Nagar; Near CRPF Group Centre  
Khewra Road :131021



## Rajasthan

### Baaran

Opp Indane Gas Agency; Shivpuri Road  
Tehsil Devari, Shahbad







**Follow Us On:**





