



PARMARTH

SAMAJ SEVI SANSTHAN



©PARMARTH SAMAJ SEVI SANSTHAN



©PARMARTH SAMAJ SEVI SANSTHAN



©PARMARTH SAMAJ SEVI SANSTHAN



©PARMARTH SAMAJ SEVI SANSTHAN



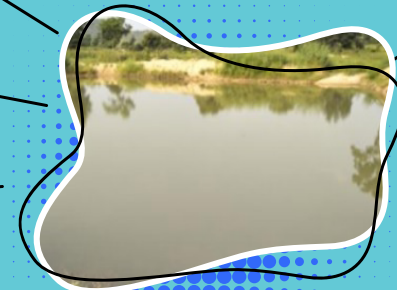
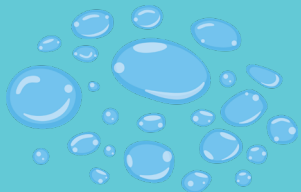
REJUVENATION MODEL FOR WATER BODIES



REJUVENATION MODEL FOR WATER BODIES

Key strategy and activities are

- **Mapping of Water Bodies and hydrological grouping of soil**
- **Assessment of Storage and water level in reservoir and landscape evaluation**
- **Participatory planning, design and construction**
- **Repair of water inlet / outlet, Seepage treatment**
- **Ensuring areas adequacy to drainage and drainage area protection**
- **Field and orchard spraying**





JAL SAHELI

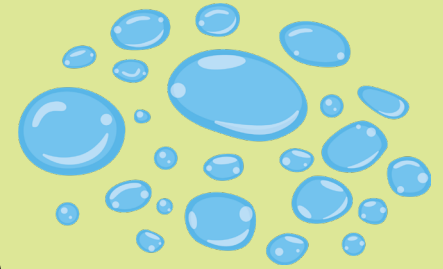
AND

PANI PANCHAYAT



JAL SAHELI AND PANI PANCHAYAT

- **The concept of Jal Sahelis was first introduced during the implementation of the European Union and Welthungerhilfe supported Integrated Water Resource Management project in 2011 by Parmarth Samaj Sevi Sansthan.**
- **The first Paani Panchayat (water resource management councils) was formed in 2011 in Jalaun district.**
- **Currently, about 100 such Pani Panchayat and 500 Jal Saheli are trained and working in Bundelkhand**



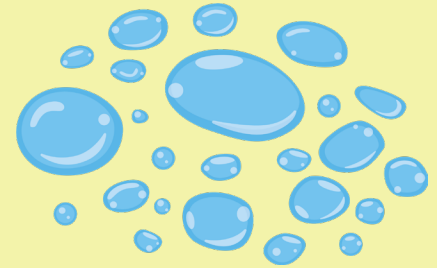


VILLAGE WATER SECURITY PLAN (VWSP)



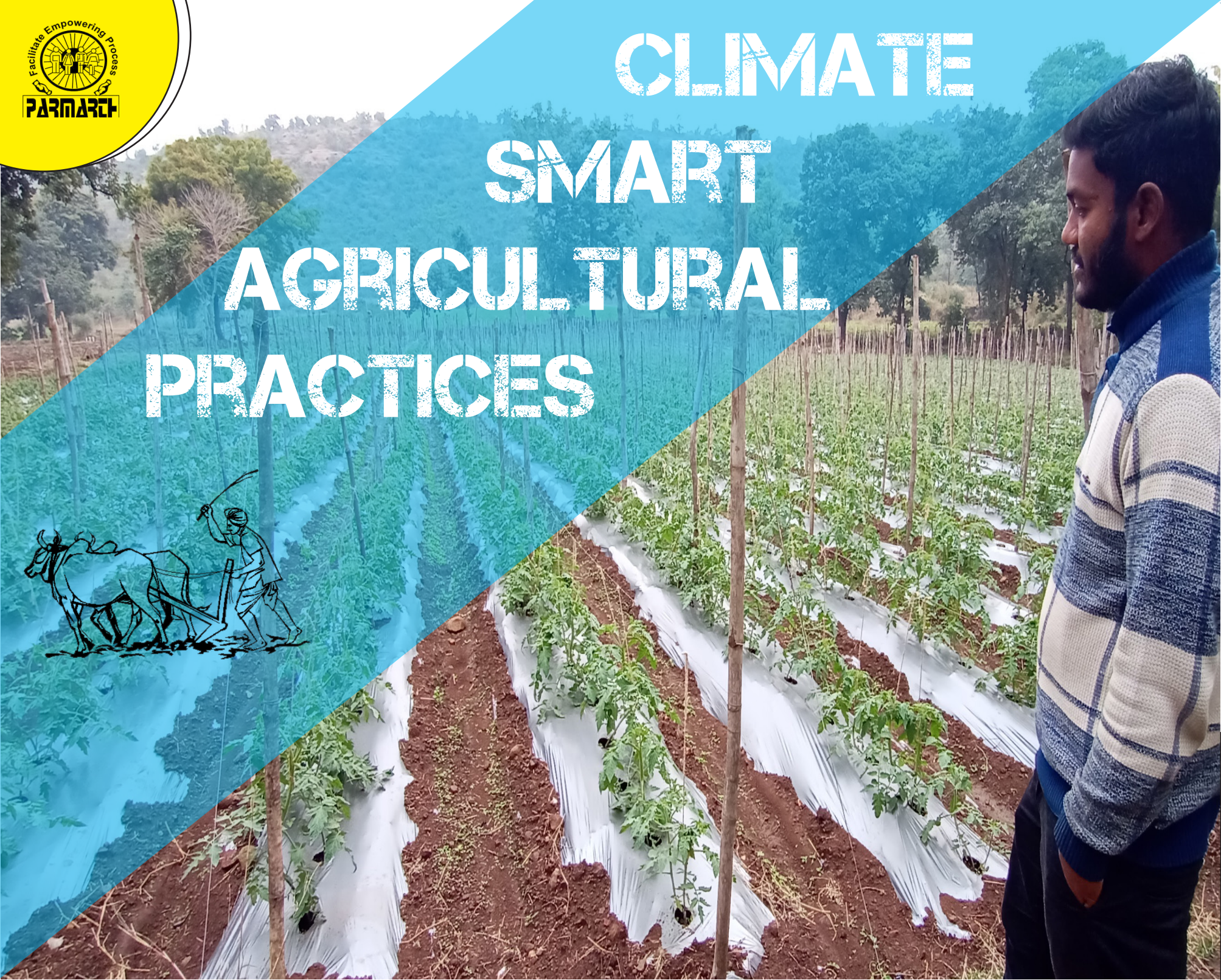
VILLAGE WATER SECURITY PLAN (VWSP)

- **A water use master plan (VWSP) is a holistic, participatory, and inclusive planning process that takes an integrated approach to the management of water resources and uses at the village level.**
- **The VWSP specifies the total water budget for its planning unit, the village development committee (VDC), and explores potential uses for it.**
- **It empowers marginalized groups to claim their rights to an equitable share of water within and between communities. The WUMP also helps local bodies with annual and periodic planning and project prioritization.**





CLIMATE SMART AGRICULTURAL PRACTICES



CLIMATE SMART AGRICULTURAL PRACTICES

- **Assessment of physical and bio-logical properties of soil**
- **Promoting multiple use of water and less water intensive crop**
- **Usage of micro irrigation system - drip/sprinkler irrigation, Persian wheels (Rahat irrigation)**
- **Usages of indigenous varieties and promotion of organic farming**
- **Reduced and Zero tillage**
- **System of crop intensification - SWI / SVI / SRI**
- **Usages of measures of improved agriculture practices - LEISA**





परमार्थ समाज सेवी संस्थान

प्रधान कार्यालय- आयकर विभाग के समाने, चुरखी रोड, उरई, जालौन- 285001
 नेटवर्किंग कार्यालय- नजा हॉस्पिटल की दूसरी वाली गली, शिवाजी नगर, झांसी- 284001

Email- parmarths@gmail.com
 Website- www.parmarthindia.com
 Phone- 0510-2321051, 05162254910